

**Murdoch
College**

in association with



**Murdoch
University**

murdochcollege.edu.au

2025 Welcome Guide

YOUR ON-CAMPUS PATHWAY TO
MURDOCH UNIVERSITY

info@murdochcollege.edu.au

Welcome to Murdoch



Welcome and thank you for choosing to study at Murdoch College, the official on-campus pathway provider for Murdoch University, a five star university overall and for teaching, employability, internationalisation, research facilities, innovation and inclusiveness*. We are looking forward to welcoming you to this exciting new chapter of your life and to assist you to gain admission to your undergraduate or postgraduate study at Murdoch University.

Murdoch College's academic team are working hard to prepare an interesting and engaging study program for you, presented by our experienced and highly qualified teachers. Our dedicated and friendly College Services Team are here to ensure you are supported throughout your time at the College and can assist you with program advice, information about campus events, transitioning to University, and your accommodation options.

We understand that moving to a new country and city is exciting but can be challenging. That is why we have created this Welcome Guide to assist you with preparing to start at the College. We hope the checklists and information about the College and the city of Perth, is helpful in getting you ready to start this exciting journey with us!

I extend a very warm welcome to you from all of us here at Murdoch College. It is a wonderful place to study and I am confident that you will enjoy your time with us.

Paul Aucoin
College Director



Find out more

*QS Stars assessment 2024.



Resource

Please visit the Murdoch University website to get more information regarding preparing to leave for Australia:

murdoch.edu.au/study/international-students

We also recommend you visit the Australian Quarantine and Inspection Service (AQIS) website:

agriculture.gov.au/travelling

Before You Leave

Moving to a new country provides different challenges. We understand that you may have questions about preparing for your stay in Australia. There are some important things you need to know before you leave that will make for a better experience when you arrive.

Money matters

The amount of money you bring with you is a personal decision. The estimated cost of living for students in Perth is approximately AUD \$25,000 per year. You must make sure you have enough funds to cover your bond/ rent and moving in expenses for your accommodation on arrival. You should also have money to cover expenses such as temporary accommodation (if applicable), meals and transport (public transport, taxis). However, you should not carry large amounts of cash with you. Check studyinaustralia.gov.au for more information.

Health

Make sure your immunisations are up to date before you leave. Have a dental check-up also as this may be less expensive in your own country.

Excess baggage

We recommend you check with your travel agent or airline regarding excess baggage and how much you will be able to take with you on your flight to Perth.

Clothing

Students dress casually for classes. November to March are the warmest months and you will be comfortable in casual clothing such as lightweight pants, shorts, skirts, shirts and jeans. June to August are the coldest months and you will be comfortable in clothing such as jeans, trousers, skirts, jumpers (sweaters/windcheaters/ coat). A light waterproof jacket is also useful. You should bring some nice clothes for formal events.

Electrical current

Electrical goods, such as computers, may be less expensive to buy overseas than in Australia and can be brought with you. Appliances rated 220–240 volts generally perform satisfactorily with the mains power supply in Australia.

To make sure that you are able to use all your electrical appliances bring a converter and an adaptor with you, or alternatively you can purchase an adaptor upon your arrival from travel stores or some supermarkets.

Checklist



Use our checklist below to ensure that you do not forget anything and are well prepared for the exciting times ahead of you.

- ☐ **Pre-Departure Webinar.**
Participate in the webinar to meet the college services team and connect with your future classmates. The webinar invitation will be sent as early as 10 weeks before the program starts and will take place 8 weeks before the start date. This is a great opportunity to ask any questions and receive answers directly from our college staff.
- ☐ **Book flight to Perth** once your student visa is approved.
- ☐ **Arrange accommodation in Perth.**
- ☐ **Passport and other documents.**
Pack your a Confirmation of Enrolment (CoE) Acceptance letter and any College documentation in your hand luggage so that it is easy to access on arrival.
- ☐ **Student Visa.**
Ensure that your passport (with visa, if applicable) is stored in your hand luggage. You will need it when passing through immigration.
- ☐ **Homestay/residential address details.**
Remember to pack your homestay or Australian residential address details in your hand luggage so they are easy to access on your arrival. You will need this information for the arrival card at immigration.
- ☐ **Proof of Health and Travel Insurance.**
You must bring proof of your travel insurance and health insurance with you and store this information in your hand luggage. Also keep a copy of each with your family at home in case you lose any documentation during your stay.
- ☐ **AUD cash.**
Carry a reasonable amount of cash (around AUD\$200–\$300) with you just in case. Try to avoid counting or pulling out your money in busy public places.
- ☐ **Appropriate clothing.**
Wear a number of layers of clothing on your flight in case the weather is hot upon arrival.
- ☐ **Prescription medication.**
Bring medical history or prescriptions required for ongoing medication translated into English. Pack medication carefully in full packaging in case you are asked questions at customs on your departure from your home country or arrival in Australia.
- ☐ **System Login.**
Check your email for login instructions from Murdoch College, which you should receive approximately two weeks before your program starts. The login credential provided will be used for Kaplink, Moodle (LMS) as well as on-campus WiFi.

Follow us on social media for useful tips and information about our College, life in Perth and Murdoch University.



Facebook



Instagram



LinkedIn



When you arrive

Arriving at the airport of a foreign country can be a little overwhelming. There's no need to feel shy about asking for help: most airport staff will be happy to help you.

Quarantine

Australia has a unique environment that is free from many of the diseases and pests found elsewhere in the world. If you are visiting Australia, you must be aware of Australian quarantine laws.

- On entering Australia you are required to complete an Incoming Passenger Card. You must read it carefully and complete the form truthfully.
- ALL animal and plant products, including food items, must be declared for inspection and in most cases will be returned.

Airport Arrivals

StudyPerth will welcome new students arriving in Perth and you can enjoy a warm welcome with the StudyPerth Airport Welcome Service.

If you're arriving at Perth Airport's international terminal (T1), stop by and visit the StudyPerth Welcome Desk. StudyPerth Airport Greeters will be there to assist and guide you as you take your first steps in Perth, including providing you with a free welcome gift, including:

- Mobile SIM Card
- Perth map & travel discounts
- Events, competitions & much more!

Getting to and from the airport has never been easier, thanks to Perth's newest train line. Providing a fast connection from Perth Airport, you'll be in the Perth CBD in only 18 minutes!

Unlike many other cities around the world, there is no airport surcharge for this service. Fares are capped at just \$5.

Trains operate every 12 minutes in peak time, every 15 minutes during the day and every 30 minutes at night.

Accommodation

International student accommodation is as varied as the requirements of students themselves! Perth has different options to suit your needs.

- Short-Stay
Includes temporary Hotel Deals for international students

- On-Campus

Murdoch University offers on-campus accommodation at Murdoch Village

- Dedicated Student Accommodation

Includes a variety of purpose-build student house complexes in Perth city center.

- Homestay

Students who stay in homestay not only have a great experience living in a family environment, but they will improve their English and get to learn more about Aussie culture in Perth, your new home.

Students under 18 will stay in a homestay until they turn 18.

Bank account

If you wish to transfer money from overseas will need to:

- Complete either a telegraphic transfer or bank draft
- Know and include the BSB and account number for the account in which they wish to make a deposit
- Check with the relevant bank as to how long the transfer will take. Bank drafts can take 6-8 weeks to process and there may be fees involved for both transactions.

When shopping, both EFTPOS (Electronic Funds Transfer at Point of Sale) and major credit cards are widely used in Australia.

Opening a bank account

You can open an Australian bank account from their home country. A number of Australian banks offer this service online. To open a bank account once you're in Australia, you will need to complete a 100-point identity check. To do this you will need to provide identification, such as your passport, student card, birth certificate, driver's license, credit card, phone or electricity bill.



Student bank accounts

Most banks and credit unions offer student accounts with lower fees (and lower rates of interest). You will need to show the bank your student ID (or, if you are an international student, your CoE) when you open the account. Make sure to ask if they have any limitations, such as maximum amounts on daily withdrawals.

Mobile phones

Here are some tips to remember when signing up for a new phone.

Tip 1 – Research

When setting up a SIM card in Australia you should first research different phone companies to find the provider that best suits your needs and budget.

Tip 2 – Identity documents

Make sure you take identification documents such as your passport, visa or bank account statements.

Tip 3 – Contract vs. Phone plans

Mobile phone plans are available in two general forms in Australia: (1) pre-paid and (2) contract.

1. Pre-paid SIM cards require you to pay an upfront fee and register the SIM yourself. You then pay for extra credit when you need it. Credit can generally be purchased online, or at convenience stores, supermarkets and service (petrol) stations.

2. Contract SIM cards, as their name suggests, lock you into a contract with a phone provider for a certain period of time (usually 24 months). You will be required to pay a certain dollar amount every month, which gives you a set amount of data and call time. Breaking the contract will likely mean that you will need to pay out the rest of your contract as an early termination fee.

Tip 4 – Unlocking your phone

Be careful! If you are using the handset from your home country, you may need to first unlock your phone so that it can use an Australian SIM card. You will need to contact your mobile phone provider in your home country for instructions on how to do this.

Tip 5 – Dual-SIMs

Some mobile phones allow dual-SIMs, which means you can install one SIM card for local calls and one SIM card for international calls.

There are a number of mobile network providers including:

- Optus optus.com.au
- Telstra telstra.com.au/mobile-phones
- Vodafone vodafone.com.au

The College Services team will be happy to assist if you need help before or after you arrive in Australia. You can contact us at studentsuccess@murdochcollege.edu.au





Your first day

Your first day will help you become acquainted with the College and studying in Perth. Please remember to bring your passport, Confirmation of Enrolment and current Australian address.

Orientation

We look forward to welcoming you to the College at orientation. Orientation is mandatory and is held face to face a few days before the start of your course.

In the four weeks preceding the start of your first study period you will receive an email from Murdoch College each week. These emails will have details about your Orientation schedule and studies.

What will I do at orientation?

We will finalise your enrolment and help you get set up as a College student. There are some tasks you will need to complete on the day, as well as some important information sessions, with topics including:

- Enrolment into course of study
- Campus tours
- College and University services and facilities
- Details of local transport and parking on campus
- Academic information/requirement
- Student ID card
- Living in Perth

Under 18 students

Australian law considers international students under the age of 18 to be minors and as such the College takes special care of their welfare and development. Students who are minors must stay in their approved accommodation until they turn 18 years of age. Students having any concerns or queries must liaise with the College Services Team who will assist with their welfare and general support arrangements. Students under 18 will meet with a welfare caregiver on a regular basis to check on your welfare status.

What to expect?

Starting your studies in Australia may be a challenging experience. You may need time to adjust to new teaching styles and new expectations, such as:

- Contributing to class discussions
- Being an independent learner
- Thinking creatively and critically
- Expressing your views and feelings
- Asking questions
- Planning and managing your time effectively
- Completing all types of program assessment (i.e. essays/ assignments/oral presentations).

Live **your** **best uni life**

Student life at Murdoch is more than just learning in your chosen field – it's also about getting involved, having fun and making lifelong friends.

Murdoch Student Guild

Run by students, for students, the Murdoch Student Guild is a student advocacy, support and service organisation, run independently from the University. They run social events and a heap of extracurricular activities.

Esports Gaming Hub

Visit our new Esports Gaming Hub equipped with 12 state-of-the-art Alienware Gaming computers.

Student Hub

The Student Hub at our Perth campus is a flexible space where you can indulge in yummy food, socialise and co-work.

Keep active

Join a social sports team or the on-campus fitness centre with discounted memberships for students.

Campus events

Experience campus events like Festival Day, Stress Less Week, weekly Marketdaze stalls, and themed tavern events.

Join our clubs

Murdoch Guild clubs are the heart of campus life and culture. They bring students together outside the academic setting and provide unforgettable experiences, events and friendships. Boasting more than 35 affiliated clubs, we have something for everyone.

Student voice matters

Once you settle in, you can champion and co-design positive changes at Murdoch via the Students as Change Agents program – and get paid for it!

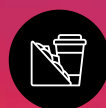


Find out more about
campus and uni life.





10+
food outlets



IGA X-Press
store



8 coffee
shops



The Tavern

What's on?

We have a full schedule of experiences, info sessions, workshops and events waiting for you. Discover how we can help you find your place at Murdoch and support you along the way.



Experience Perth

Perth is a youthful and diverse city with a vibrant nightlife, spectacular outdoor spaces and a unique urban charm.

The capital of Western Australia, Perth is a prosperous and thriving city based on the shores of the Swan River. Making the most of the warm, dry summers and cool, wet winters, Perth residents have everything they need with a large shopping district offering a cosmopolitan mix of cafes, restaurants, pubs and thriving nightlife.

As the sunniest capital city in Australia, Perth is a cultural hub of activity, social events and weekend getaways. Known for the friendly locals that call Perth home, Perth provides a welcoming and safe environment for you and your family.

Murdoch's Perth campus is located approximately 15 minutes from both the historic port-city of Fremantle and bustling City of Perth, making it easy for you to spend your free time exploring and participating in a range of activities and events.



The Bucket List

☐ Elizabeth Quay

An exciting waterfront precinct on the banks of the Swan River, Elizabeth Quay is a vibrant destination with activities for people of all ages. It features the BHP Water Park, public artworks, a range of world-class bars and restaurants.

☐ Cottesloe Beach

Boasting over a kilometre of pristine white sand and turquoise water, Cottesloe Beach is one of Perth's most popular beach destinations.

☐ Fremantle

The historic port-city of Fremantle is renowned for its laid-back attitude, art and culture, vibrant cappuccino strip and internationally acclaimed restaurants.

☐ Kings Park

At the foot of the CBD, Kings Park is one of the world's largest and most beautiful inner city parks that boasts rich Aboriginal and European history with sweeping views of the Swan River.

☐ Rottnest Island

Just 20km off the coast of Perth, Rottnest Island is the perfect destination for a day away from study or a longer island vacation.

☐ Northbridge

A buzzing hub of hip bars, fantastic restaurants, quirky boutiques and exquisite art, Northbridge is the place where Perth comes alive. With the Perth Cultural Centre at its heart, there is always something to do in Northbridge.



A Strong Economy

With a thriving start-up scene and an abundance of job and internship opportunities, Western Australia boasts one of the best performing economies in the world.

There are many exciting career and job opportunities available to you in Western Australia. WA is classified as a regional destination. As an international student you may be eligible for valuable post-study visa benefits.

You can register at Study Perth's Careers Centre employability portal to access their Careers Connect support. This service assist you in developing your

career pathway, connecting with employment opportunities or securing a part-time job while studying.

Jobs Connect forums are also run regularly by the Department of Jobs, Tourism, Science and Innovation to connect you with West Australian employees and help you find the best job for your skillset.

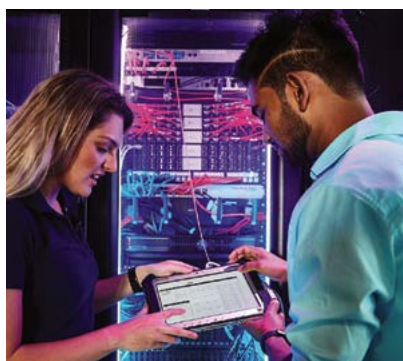
Cost of Living

The day-to-day living costs in Perth are lower than other major cities in Australia (and worldwide), making it an affordable destination and attractive place to live.

The prices in the table to the right are indicative. Your living costs will depend on various factors including your financial capacity, where you stay, the costs associated with your studies and other lifestyle needs and preferences.

APPROXIMATE COSTS (WEEKLY)	MURDOCH UNIVERSITY VILLAGE	HOMESTAY (CATERED)	INDEPENDENT (1 BEDROOM TENANCY)
Accommodation	AU\$209-\$487	AU\$350-\$405	AU\$450+
Utilities	AU\$0(included)	AU\$0(included)	AU\$80-\$140
Groceries & supplies	AU\$80-\$120	AU\$0(included)	AU\$80-\$120
Internet/mobile	AU\$20-\$50(internet included)	AU\$40-\$70	AU\$40-\$70
Public transport	AU\$20-\$25	AU\$20-\$25	AU\$20-\$25
Miscellaneous	AU\$25-\$50	AU\$25-\$50	AU\$25-\$50
Average weekly total	AU\$354-\$732	AU\$435-\$550	AU\$695-\$855

Campus facilities





Murdoch College is located on the Murdoch University campus on South Street in Murdoch, the campus is close to Perth's CBD and just 8km from Fremantle.

Student Services

You can meet with our College Services Team at any time to discuss any challenges or concerns that may arise.

What can the College Services Team do for you?

- Connect you with academic support
- Provide you with program and enrolment advice
- Provide welfare support for personal issues (including arranging confidential counselling with the Student Counselor)
- Help you manage your time and deal with study pressures
- General study and motivation assistance
- Help with referring students to accommodation services including homestay, on-campus and off-campus options
- Support for students under the age of 18
- Help accessing the study portal and Kaplink.

Learning support

We have students from all over the world, and to ensure you have the best opportunity to reach your potential our tutorial support sessions are part of your study program. Ask your College Services Team for more details.

Making friends

Murdoch College is located on the Murdoch University campus and you are able to take advantage of the educational, recreational and social facilities available on campus. This makes it easy for you to make friends from both within the College and the University.

Social Activities

The College Services Team organises regular events in and around the University for you to broaden your experience, enhance your social networks and provide support and guidance.

Library

You can access the Murdoch University Library, as well as the Kaplan online library, with access to all of its resources. Find out more at murdoch.edu.au/library

On campus

- Chiropractic Clinic
- Theaters
- Tavern
- Letter Box
- Bank ATM
- Cafes and restaurants
- Convenience store



Getting to campus

Just 15km from Perth's city centre and 8km from Fremantle, our Perth campus is easy to reach by car, public transport, or via a network of walkways and cycleways.

Read more about
getting to campus.

Scan to find out more



SCAN QR CODE

Getting to Perth campus



Train

Just 15 minutes from the city to Murdoch train station, then either a quick trip by connecting bus or a 10 minute walk to the campus.



Bus

Regular bus services past campus.



Car

15 minutes from the city on Kwinana Freeway (exit South Street). There are almost 4,000 car park spaces, so there is ample parking available.



Bike

Excellent cycle routes to campus with secure bike storage available.

Mandurah campus

Set in the heart of a coastal town, our Mandurah campus offers clinical, academic and research expertise and state-of-the-art facilities. Getting here is easy as we're accessible by car, public transport and bicycle. You'll find us on Education Drive in Greenfields, Mandurah, next to South Metropolitan TAFE and close to the Kwinana Freeway.

Rockingham campus

Our Rockingham campus focuses on our enabling pathway programs. We're located on Dixon Road in Rockingham, a major urban centre on the south coast of the Perth metro area, so we're easily accessible by car and public transport.



Public transport

An excellent public transport system of buses, trains and ferries means you can travel to most places within Perth safely and at a very reasonable cost.

Perth, a city designed for your convenience, may be smaller than other major urban centers, but it offers reliable transport options to ensure your journey from home is easy and affordable.

Featuring an extensive transport network, capped pricing, and complimentary buses in key entertainment and business hubs, Perth ensures that your journey is both swift and budget-friendly.

Embrace the city's warm Mediterranean climate as you indulge in an outdoor lifestyle, where saving money and staying active are effortlessly integrated into your daily routine. Whether cruising on a bike or strolling on foot, Perth provides not just a city but an experience tailored for your comfort and well-being.

Step 1: Get yourself a Smart Rider card.

To use public transport in Perth, the easiest way is to simply purchase a Transperth SmartRider card that can be used for travel on all public transport types.

You can purchase a SmartRider card at Perth Airport, Transperth InfoCentres and SmartRider retail outlets. As an international student, you're eligible for a Tertiary SmartRider, which offers student discounts on travel. A form will be provided at Orientation for you to change your Smart Rider to have student discount.

Before using Perth's public transport options, you'll need to load the SmartRider card with some money to cover your fares.

Useful links include:

transperth.wa.gov.au/SmartRider/Types-of-SmartRider

transperth.wa.gov.au/contact-us/infocentres

transperth.wa.gov.au/smartrider/types-of-smartrider/tertiary-smartrider

Step 2: Plan your route

Check the timetables at the Transperth website or download a trip planning app on your phone. Google Maps works well for transport in Perth as well.

Step 3: Catch a ride

When catching the bus you will usually enter using the front door, but for the train, you can use any door to enter. Upon entering the vehicle, you need to validate your trip by tapping your card on the validation machines found just inside the door.

Step 4: Stop!

If you are waiting for a bus at the bus stop, you need to raise your hand so the driver knows to stop for you. On the bus, you have to press the button to stop the bus. Trains will stop automatically at all stations. Don't forget to tap off once you exit the bus or train station!

Cycling to campus

Cycling in Perth is not only easy, but also ecofriendlier and faster than the car or bus.

Biking facilities at the University

With a network of dedicated bike paths available to cyclists, it's easy to get around Perth by bicycle.

All cyclists must wear an approved bike helmet that is securely fitted and fastened.

Learn more about safe cycling on roads and footpaths, and related offences and penalties. Also see: wa.gov.au/organisation/road-safety-commission/cyclists

Beach safety

Australian beaches are unpredictable and have hidden dangers that you should be aware of. Take the time to learn how to have a safe and fun trip to the beach.

Beach safety tips:

Always swim between the red and yellow flags at beaches with patrolling lifeguards.

- Never swim alone.
- Read and obey the signs.
- Don't swim directly after a meal.
- Don't swim under the influence of alcohol or drugs.
- Always check the depth of the water.
- If you get into trouble in the water, stay calm. Signal for help by waving your arm and wait for assistance.
- Learn how to spot a rip and keep clear of it.

Learn more at: beachsafe.org.au



Student health

Your health is the most important thing, and Australia's health and emergency services might be different to those in your country. Here are some things you should know:

For emergencies

If you or a friend are seriously ill or there is any type of emergency, call 000. Stay calm and describe to the operator on the line what type of assistance you need (ambulance, fire or police) and your location. You may be required to describe any symptoms. Explain as much as you can, do not worry if you are not confident with your English, say as much as you can, as clearly as you can.

Medicines

Pharmaceutical products in Australia may be more expensive than in your home country. Medications such as antibiotics will require a doctor's prescription and may cost approximately AUD \$25 for a course. Some milder antihistamines may be bought over-the-counter and may cost around AUD \$15.

A pain-relieving tablet such as paracetamol or aspirin may be purchased without prescription at supermarkets.

Overseas Student Health Cover

The Department of Home Affairs requires you to be covered by health insurance for the entire duration of your stay in Australia. This is arranged through the Overseas Student Health Cover (OSHC) scheme. OSHC is insurance that provides cover for the costs for medical and hospital care which international students may need while in Australia. Murdoch College's preferred provider is Bupa Australia. This insurance covers:

- Visits to a doctor (approximately 85% of the scheduled fee)
- The total cost of hospital treatment provided that the treatment is in a public hospital and is provided by a hospital doctor
- Other medical services such as pathology and radiology
- Emergency ambulance transport.

Doctors

Murdoch Medical Center, located on campus, provides convenient, bulk-billed healthcare for our College students.

If you are feeling sick or have a medical issue that is not an emergency, then a doctor – also called GP (General Practitioner) should be your first point of contact.

There are several GPs in Murdoch (near the campus), that our friendly College Services Team can direct you to.

You should take with you to your first appointment:

- student ID Card
- OSHC card
- list of medications you are currently taking
- list of vaccinations you may have received in the past.

After hours GP

If it's after 6pm and you are feeling unwell, you can call a doctor to your home. Visit healthcareoptions.health.wa.gov.au for more information.

Bupa GPs

If you are a Bupa member, you may wish to visit a GP within the Bupa Network as you will receive discounted rates.

To find a GP in your local area visit oshc.bupa.com.au/health-insurance/oshc.

Should I see a doctor?

If you require the opinion of a nurse as to whether you need to attend the doctor or hospital, call Health Direct Australia on 1800 022 222 to speak with a qualified nurse. An interpreter is available.

Medical costs

Medical costs are at the discretion of your local doctor or hospital. This insurance does not cover:

- Dental costs
- Physiotherapy
- Optical glasses, contact lenses
- Medical expenses for any pre-existing medical condition that you had before you came to Australia, during the first 12 months of membership
- Treatment covered by provisions for compensation and damages or accidents
- Pre-screening in the first 12 months

Please check with your OSHC provider for more information.

More information

- If you would like to renew or increase the length of your OSHC, please contact your OSHC provider.
- If you would like extra cover for items not covered e.g. dental, physiotherapy, optometry (glasses, contact lenses), you may wish to take out extras cover for an extra cost.
- If you change your address while living in Australia you should notify your OSHC provider within seven days.
- If the doctor you visit does not accept your OSHC card, please pay the bill in full for your visit, and collect your receipt. Then take your receipt to any Australia branch where you can apply for a rebate.

If you have any questions visit the OSHC provider website or branch, or ask your education agent. (Students could be insured by any provider, not specifically by Bupa), or ask your education agent.

Sonder is here to help

Murdoch College prioritizes the wellbeing of our students, and we partner with Sonder to ensure that you always feel safe and secure while you are in Australia.

Sonder is a 24/7 free safety and wellbeing service, connecting you safely to confidential mental and physical health support from our team of experts and in-person responders, as well as safety features like "Check on me" and "Track my journey". It is available in more than 300 languages.



Laws & customs

You may find that laws are enforced differently in Australia than they are in your home country. You must obey this country's laws and respect its customs. It is important that you understand the laws, rules, and customs that you may encounter.

Laws

- In Australia no one under the age of 18 may buy or drink alcohol. It is against the law to buy alcohol for someone you know is under the age of 18.
- Driving under the influence of alcohol is a serious crime and police make regular random checks.
- Buying, selling and using drugs is illegal.
- We may disclose personal information about you in accordance with our Privacy Policy (available at murdochcollege.edu.au/pdf/australian-privacy-policy-kaplan-group-august-2021.pdf), including to your education agent and the Australian government.

Customs

Customs are an accepted way of behaviour in a country. You need to know the customs of Australia to help you feel comfortable with people. Some important customs to know include:

- Please and Thank you: It is very important to use these words when asking or receiving gifts or favours.
- Women: Women in Australia are equal to men and should always be treated fairly.
- Most men and women share equally in household work and childcare.
- Queues: Always stand in line and wait your turn when buying tickets, in a bank, post office or waiting for a bus. Keep to the left when standing on escalators or when walking/cycling on public pathways.
- Friendliness: Australian people talk to strangers in public areas. This is a great way to practice English, but caution should be taken. You should not give out your address or telephone number, or accept inappropriate invitations.
- Workplace Etiquette: Australians use a firm handshake when meeting someone for the first time. In the workplace, as with many situations, Australians will address one another using only first names. Eye contact is very important in conversation.
- Clothing: Clothing is an individual choice. Australian people dress for comfort, weather or social occasion.



Religion

While some Australian customs are influenced by English traditions and the predominant religion, Christianity, Australia has a growing multicultural population with different religions and faiths. There are places of worship for all religions and faiths in Perth, all accessible by public transport.

Values in Australian society

- Rights of the individual
- Equality of individuals independent of gender, race, religion or personal preferences
- Independence
- Punctuality
- Politeness

Your responsibilities

As an overseas student on a student visa, you have responsibilities to:

- Satisfy your Student Visa conditions
- Maintain your Overseas Student Health Cover (OSHC) for the period of your stay



Key Dates & information

Western Australian Public Holidays

HOLIDAY	2025
New Year Holiday	1 Jan
Australia Day	26 Jan
Labour Day	3 March
Good Friday	18 April
Easter Monday	21 Apr
ANZAC Day	25 Apr
Western Australia Day	2 Jun
Monarch's Birthday	29 Sept
Christmas Day Holiday	25 Dec
Boxing Day Holiday	26 Dec

Emergency numbers

Police, Fire, Ambulance: 000

Useful website links

Australian Quarantine & Inspection Service

www.agriculture.gov.au/travelling

Australian Department of Foreign Affairs & Trade

www.dfat.gov.au

Bureau of Meteorology

www.bom.gov.au

Department of Home Affairs

www.homeaffairs.gov.au

Council of International Students Australia (CISA)

www.cisa.edu.au

- Meet the terms of the written agreement with the College
- Inform the College if you change your address or phone number
- Maintain satisfactory course progress
- Maintain a minimum of 80% attendance during your course
- If you are under 18, maintain your approved accommodation, support and general welfare arrangements.

Smoking

Murdoch College and Murdoch University are smoke free environments, including toilets and fire stairs. Off-campus if you wish to smoke, it is polite to be at least four metres away from building entrances, and you must put all cigarette butts in a bin. If you set off a fire alarm in the building by smoking you will be liable for the costs, e.g. Metropolitan Fire Service call out fees.



Your on-campus pathway to Murdoch University

MURDOCH COLLEGE

Building 121, 90 South Street, Murdoch WA 6150

Telephone: 08 9423 1803

Email: info@murdochcollege.edu.au

CONNECT WITH US



facebook.com/murdochcollege



instagram.com/murdochcollege



linkedin.com/company/murdochcollege



youtube.com/@murdochcollege-aus

murdochcollege.edu.au